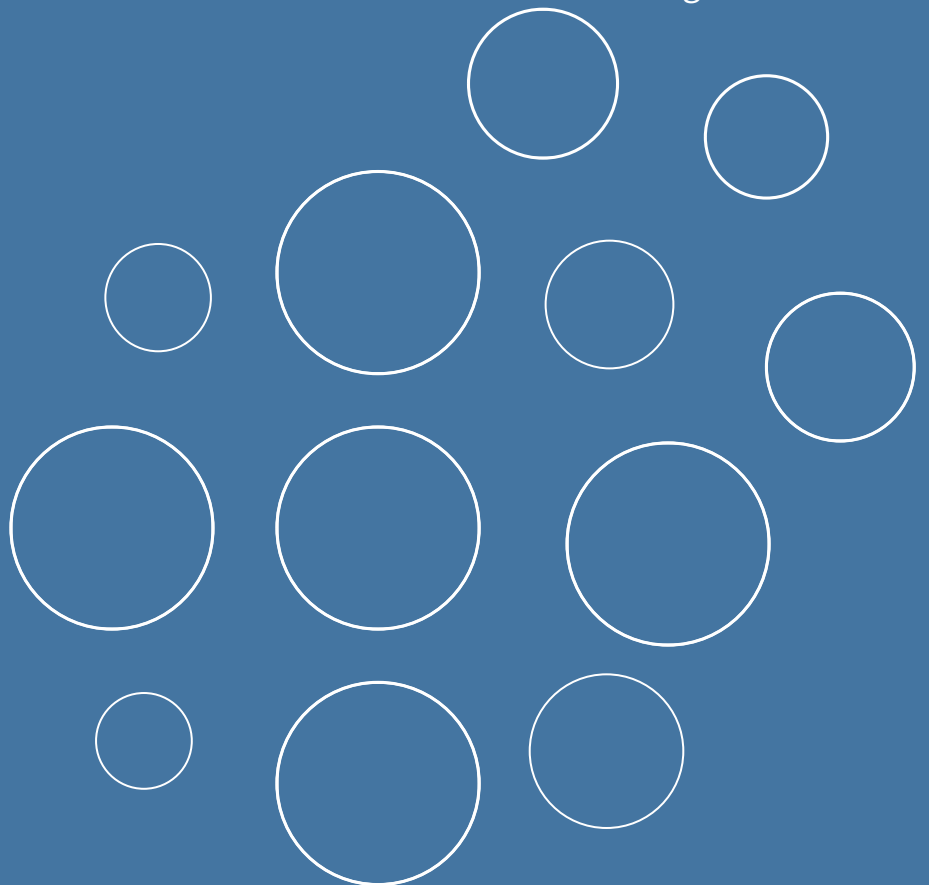




# Corrugated Pipelines

Accessories Technical Catalogue





# Corrugated Pipelines Accessories

## Technical Catalogue

---

### Summary

1	Couplers for Corrugated Pipelines.....	03
2	Couplers for Cable Ducts and Drainage.....	04
3	Gaskets for Corrugated Pipes.....	05
4	House Connection Gaskets.....	06
5	Plastic Rod for Extrusion Welders.....	07
6	Reinforced Tape.....	08

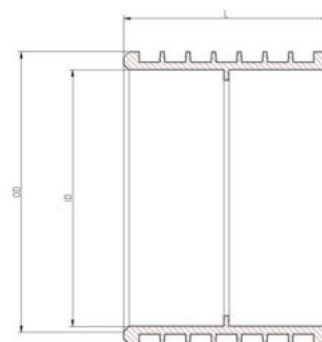
# 1. Couplers for Corrugated Pipelines

## Description

HDPE injection molded couplers for the jointing of double wall corrugated pipes with elastomeric ring according EN 13476.

## Technical properties

Raw material: HDPE  
 Color: Black  
 Ring stiffness: SN8



## Dimensions

### External diameters

DN/OD	ID [mm]	L [mm]	Pcs/pallet
160 Type A	160,5 (-0/+1,5)	200 (± 10)	378
160 Type B	162,0 (-0/+2,0)	200 (± 10)	378
200 Type A	200,6 (-0/+1,5)	220 (± 10)	240
200 Type B	202,0 (-0/+2,0)	220 (± 10)	240
250	250,9 (-0/+2,0)	230 (± 10)	128
315	316,0 (-0/+2,0)	270 (± 10)	77
400	401,3 (-0/+2,0)	320 (± 10)	36
500	501,6 (-0/+3,0)	375 (± 10)	20
630	632,0 (-0/+3,0)	450 (± 10)	12

### Internal diameters

DN/ID	ID [mm]	L [mm]	Pcs/pallet
300	350,5 (-0/+2,0)	250 (± 10)	63
400	466,5 (-0/+2,0)	300 (± 10)	30
500	582,0 (-0/+2,5)	370 (± 10)	15

## Reference Standards

EN 13476-3

Plastics piping systems for non- pressure underground drainage and sewerage - Structured-wall piping systems of unplasticized poly(vinyl chloride)(PVC-U), polypropylene (PP) and polyethylene (PE) - Part 3: Specifications for pipes and fittings with smooth internal and profiled external surface and the system, Type B

## 2. Couplers for Cable Ducts and Drainage

### Description

HDPE injection molded couplers for the jointing single wall corrugated pipes for cable ducts and drainage.

### Technical Properties

Raw material: HDPE  
Color: Black



### Dimensions

#### Smooth couplers

DN	Length [mm]	Pcs/pallet
40	70 (± 5%)	10000 (big bag)
50	70 (± 5%)	8000 (big bag)
63	83 (± 5%)	4000 (big bag)
75	98 (± 5%)	2400 (big bag)
90	120 (± 5%)	1500 (big bag)
110	125 (± 5%)	1260
125	140 (± 5%)	936
140	146 (± 5%)	900
160	162 (± 5%)	462

#### Corrugated couplers with hook

DN/ID	Length [mm]	Pcs/pallet
110	178 (± 5%)	898
125	178 (± 5%)	700
160	200 (± 5%)	378
200	222 (± 5%)	240

### 3. Gaskets for Corrugated Pipes

#### Description

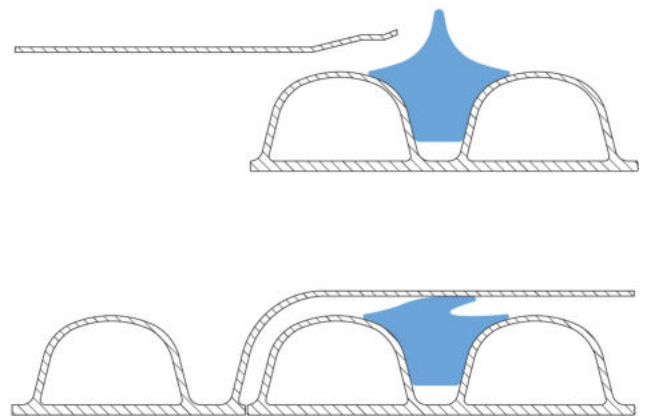
The gaskets for double-wall corrugated pipelines are made of rubber according EN 681-1 and comes in two different shapes: symmetric and asymmetric. Each gasket is designed starting from the specific corrugation profile of the pipe and is manufactured by injection moulding, thus ensuring the best long-term leak-tightness of the joint.

#### Technical Properties

Raw material: EPDM rubber according EN 681-1  
Hardness class: 60 ( $\pm 5$  IRHD)\*  
Color: Black  
\*Different materials and hardness available upon request

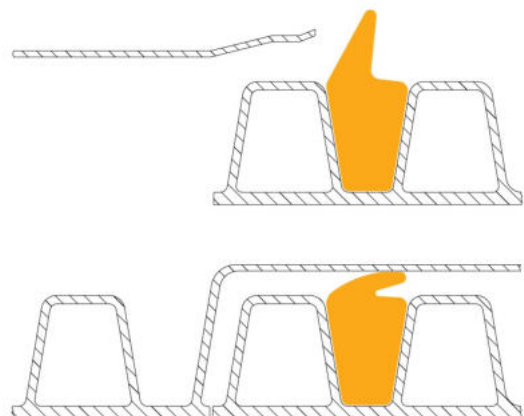
#### Symmetric Profile

Inside diameter series: 200 mm - 1.200 mm  
Outside diameter series: 160 mm - 1.200 mm  
Water tightness according to EN 13476



#### Asymmetric Profile

Inside diameter series: 110 mm - 1.200 mm  
Outside diameter series: 200 mm - 1.200 mm  
Water tightness according to EN 13476



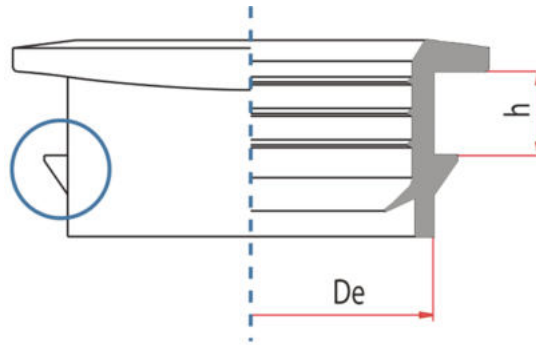
## 4. House Connection Gaskets

### Technical Properties

Raw material: EPDM rubber  
 Hardness class: 60 ( $\pm 5$  IRHD)\*  
 Color: Black

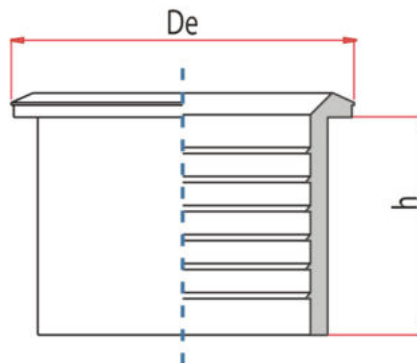
\*Different materials and hardness available upon request

### Lock Type



Connection DN	Pipeline OD [mm]	Pipeline ID [mm]	h [mm]	De [mm]	Drilling crown DN*
160	315 ÷ 400	300 ÷ 400	33 ± 0.5	202 ± 3.0	164
160	500 ÷ 630	500 ÷ 600	51 ± 1.0	202 ± 3.0	164
160	800 ÷ 1200	800 ÷ 1200	91 ± 1.5	202 ± 3.0	164
200	500 ÷ 630	500 ÷ 600	51 ± 1.0	242 ± 3.0	208
200	800 ÷ 1200	800 ÷ 1200	91 ± 1.5	242 ± 3.0	208

### Flat Type



Connection DN	Pipeline OD [mm]	Pipeline ID [mm]	h [mm]	De [mm]	Drilling crown DN
110	250 ÷ 1200	300 ÷ 1200	90 ± 1.0	144 ± 1.5	104
160	250 ÷ 1200	300 ÷ 600	90 ± 1.0	203 ± 3.0	164
200	400 ÷ 1200	400 ÷ 1200	90 ± 1.0	244 ± 3.0	204

## 5. Plastic Rod for Extrusion Welders

### Description

Plastic rods are commonly used with extrusion welders for the manufacturing of different products:

- fittings and manholes for corrugated pipelines
- fabricated items for unpressurized smooth pipelines
- water treatment and rainwater tanks
- plastic insulation of galvanizing tanks

PlusPipes's plastic rods come into two different polymers, POLYETHYLENE or POLYPROPYLENE, and can be delivered in different colors and diameters upon request.

### Technical Properties

Standard rod diameter: 4 mm (3 mm upon request)

Standard package: 10kg roll with plastic support

Roll dimensions: 350 x 350 x h220 mm



### Types

#### Polyethylene

Characteristic	Standard	UM	PE100	HDPE
Color	-	-	Black	Black*
Density	ISO 1183	g/m <sup>3</sup>	0.959	0.955
MFR 190°C - 5kg	ISO 1133	g/10'	0.25	0.85
Yield stress	ISO 527-2	MPa	25	27
Tensile modulus	ISO 527-2	MPa	1100	1370

#### Polypropylene

Characteristic	Standard	UM	PP
Color	-	-	Grey*
MFR 230°C - 2.16kg	ISO 1133	g/10	0.70
Yield stress	ISO 527-2	MPa	26
Tensile modulus	ISO 527-2	MPa	1100

\*Different colors available upon request



## 6. Reinforced Tape

### Description

RT60 is a FRP laminate with thermoplastic polymers, usually polypropylene or polyethylene, manufactured by using an impregnating process to fully "wet-out" each fiber filament. The result is an innovative product, which holds the fiber glass strength and the impact resistance, the resilience and the flexibility of thermoplastics.

RT60 is successfully used in various markets and applications like:

- PIPING SYSTEMS      reinforcement of sockets in corrugated pipelines
- AUTOMOTIVE            reinforcement of sun shades and front end bolsters
- BALLISTICS             side body armor and vehicle protection
- WIND ENERGY        reinforcement of wind blades



### Technical Properties

#### General

Characteristic	UM	Value
Fiber content by weight	%	60 ± 5
Thickness	mm	0.30 ± 0.02
Width	mm	50 ÷ 1200
Weight	g/m <sup>2</sup>	430 ± 5%
Fiber Direction Tensile Strength	MPa	450 ± 10%
Fiber Direction Tensile Modulus	MPa	25.0 ± 5%

#### Tape RT60-75/PP

Characteristic	UM	Value
TAPE - Width	mm	74 ± 0.5
TAPE - Weight	Kg/m	37.0 ± 5%
COIL - Inner diameter	mm	76.2 ± 0.1
COIL - Outer diameter (approximate)	mm	350
COIL - Weight (approximate)	kg	9.7
COIL - Metres (approximate)	m	250



PlusPipe s.r.l.  
Via Caduti di Nassirya 7/C  
20900 Monza (MB)  
VAT n° IT 06086700967  
Tel +39 039 9650010  
info@pluspipe.it  
[www.pluspipe.it](http://www.pluspipe.it)