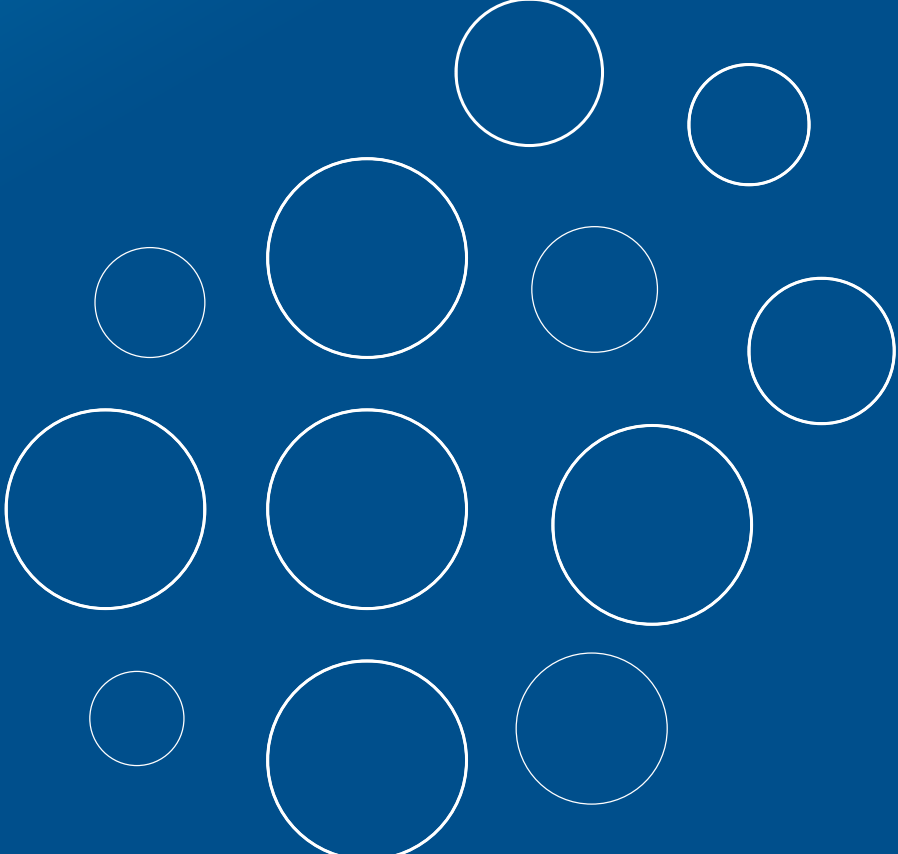




# Cooling Systems





## •• INDEX

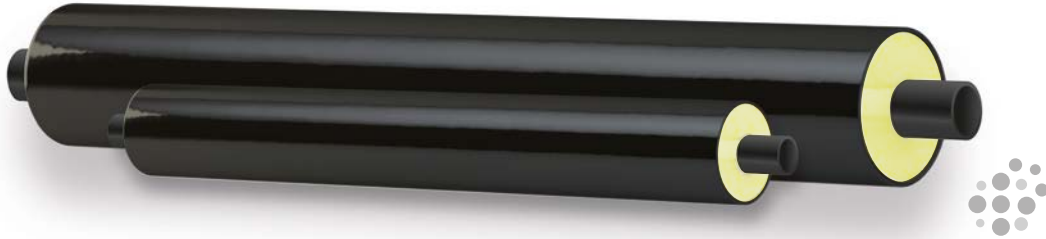
Cooling Systems

①	PREINSULATED PIPES
②	PREINSULATED FITTINGS
③	JOINT KIT FOR BURIED PIPELINES
④	JOINT KIT FOR ABOVE GROUND PIPELINES





## PREINSULATED PIPES



### MAIN PROPERTIES

• Service pipe	<b>PE100 smooth pipe for water supply</b>
• Insulation	<b>PUR foam</b>
• Outer casing	<b>HDPE jacket pipe</b>
• Cut-back	<b>150 mm</b>

### DIMENSIONS (mm)

Service pipe OD [mm]	Casing pipe OD [mm]	SDR17 PN10	SDR11 PN16
32	90		
50	110		
63	125		
75	140		
90	160		
110	200		
140	225		
160	250		
200	315		
225	315		
250	355		
250	400		

Other dimensions upon request

### REFERENCE STANDARDS

#### EN 12201

Plastics piping systems for water supply, and for drainage and sewerage under pressure - Polyethylene (PE)

#### EN ISO 15494

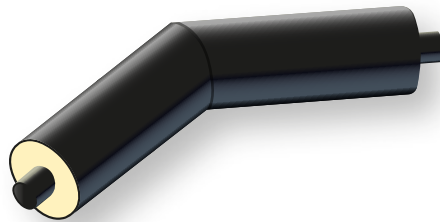
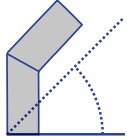
Plastics piping systems for industrial applications - Polybutene (PB), polyethylene (PE) and polypropylene (PP) - Specifications for components and the system - Metric series

#### EN 253

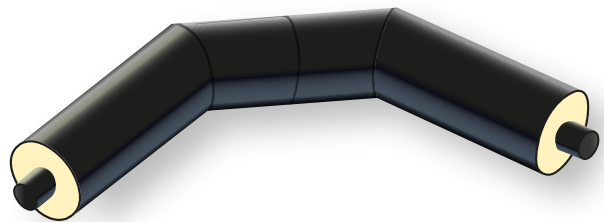
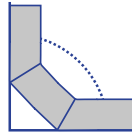
District heating pipes - Preinsulated bonded pipe systems for directly buried hot water networks - Pipe assembly of steel service pipe, polyurethane thermal insulation and outer casing of polyethylene

## PREINSULATED FITTINGS

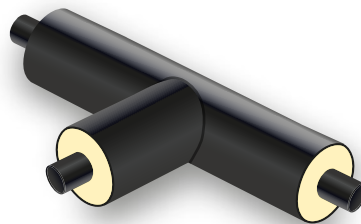
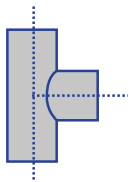
### BEND 45°



### BEND 90°



### TEE



### MAIN PROPERTIES

- Service pipe
- Insulation
- Outer casing
- Cut-back

**PE100 moulded fitting (elongated)**  
**Polyurethan foam (PUR)**  
**HDPE jacket pipe**  
**150 mm**

### REFERENCE STANDARDS

#### EN 12201

Plastics piping systems for water supply, and for drainage and sewerage under pressure - Polyethylene (PE)

#### EN ISO 15494

Plastics piping systems for industrial applications - Polybutene (PB), polyethylene (PE) and polypropylene (PP) - Specifications for components and the system - Metric series

#### EN 253

District heating pipes - Preinsulated bonded pipe systems for directly buried hot water networks - Pipe assembly of steel service pipe, polyurethane thermal insulation and outer casing of polyethylene



## ⚙️ JOINT KIT FOR BURIED PIPELINES

### ⚙️ CORE PIPE JOINT

- PE100 EF Coupler



### ⚙️ REFERENCE STANDARDS

#### EN 12201

Plastics piping systems for water supply, and for drainage and sewerage under pressure - Polyethylene (PE)

#### EN ISO 15494

Plastics piping systems for industrial applications - Polybutene (PB), polyethylene (PE) and polypropylene (PP) - Specifications for components and the system - Metric series

### ⚙️ CASING PIPE JOINT

- 1 x HDPE shrinkable muff L=600mm
- Butyl based mastic tape 50 x 1 mm
- 2 x lateral shrink collars L=150mm
- 1 x foaming kit (Polyol + Isocyanate)
- Ventilation plugs, welding plugs and FOPS



### ⚙️ REFERENCE STANDARDS

#### EN 489

District heating pipes - Preinsulated bonded pipe systems for directly buried hot water networks - Joint assembly for steel service pipes, polyurethane thermal insulation and outer casing of polyethylene

## ⌘ JOINT KIT FOR ABOVE GROUND PIPELINES

### ⌘ CORE PIPE JOINT

- PE100 EF Coupler



### ⌘ REFERENCE STANDARDS

#### EN 12201

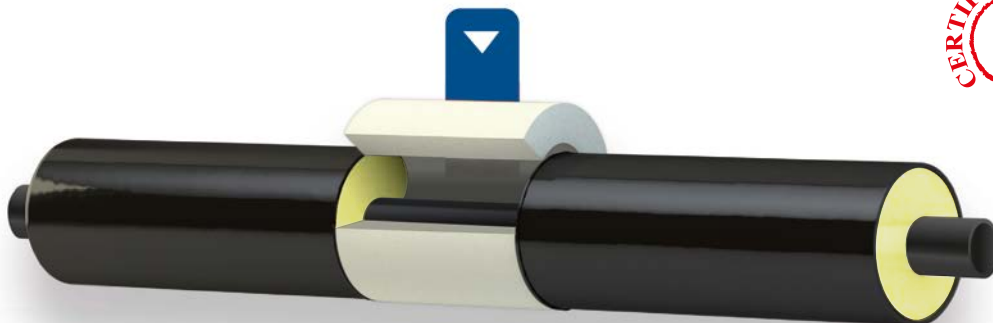
Plastics piping systems for water supply, and for drainage and sewerage under pressure - Polyethylene (PE)

#### EN ISO 15494

Plastics piping systems for industrial applications - Polybutene (PB), polyethylene (PE) and polypropylene (PP) - Specifications for components and the system - Metric series

### ⌘ CASING PIPE JOINT

- 2 x PUR half shells shaped for EF couplers
- 1 x shrink collar L = 450 mm



### ⌘ REFERENCE STANDARDS

#### EN 489

District heating pipes - Preinsulated bonded pipe systems for directly buried hot water networks - Joint assembly for steel service pipes, polyurethane thermal insulation and outer casing of polyethylene

